



Harlesden Town Centre Urban Realm Scheme

Brent Council has been working with the Harlesden Town Team 2010 on ideas to improve the streets around Harlesden.

A key decision that needs to be made is what paving slabs will be used throughout the area.

Five paving slabs have been shortlisted, they are outlined in this document. Samples are available for inspection at Harlesden Library until 7th March 2011.

Please send feedback to: teamharlesden@yahoo.co.uk

If you would like more information please contact:

Jared Plumridge or Paul Smith from Brent Council on **020 8937 5110**, or Leroy Simpson, Chairman of Harlesden Town Team 2010 on **07884 043281**

Marshalls Standard Pimple Paving

Colour: Natural grey

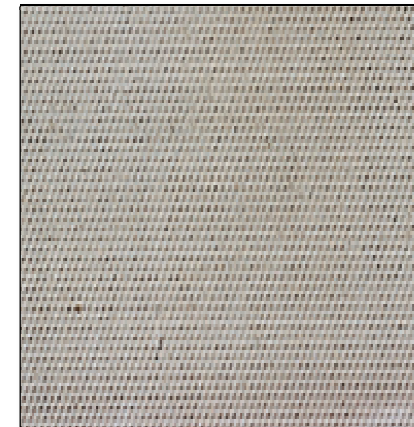
Marshalls Standard Pimple Paving flags are cost-effective and functional.

They are widely used for public footpaths, as well as for patios, drives and just about anywhere where else a simple, reliable and effective pavement is required.

They are not designed to be particularly attractive - utilitarian is the best way to describe them.

They can be supplied in an extensive choice of size and thickness and can be supplied with either steel or fibre reinforcement which makes the slab less likely to break if a vehicle drives over it and if the flag does break, the reinforcement holds the flag together, preventing trip hazards.

Average supply cost - **£18.50/m²**



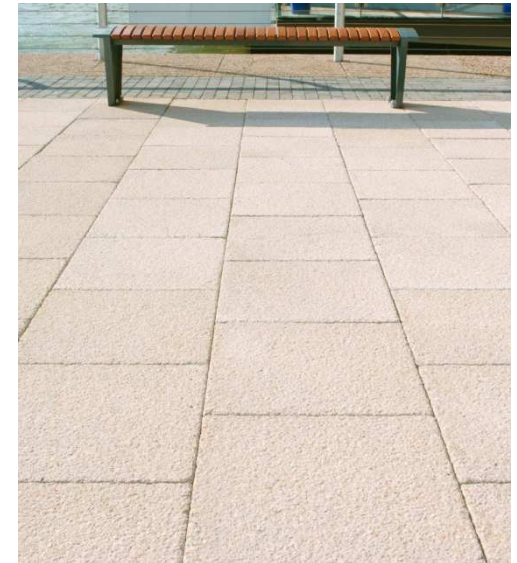
Marshalls Charnwood Textured Concrete Paving

Colour: Buff

Marshalls Charnwood Textured Concrete Paving flags have a defined textured finish created by the use of larger sized aggregates that produces a unique, textured look at lower cost than natural paving.

They are available in a wide selection of sizes but are not available with steel or fibre reinforcement making them less suitable for areas where there is the possibility of vehicles driving over them.

Average supply cost - **£31.42/m²**



Marshalls Conservation Textured Concrete Paving

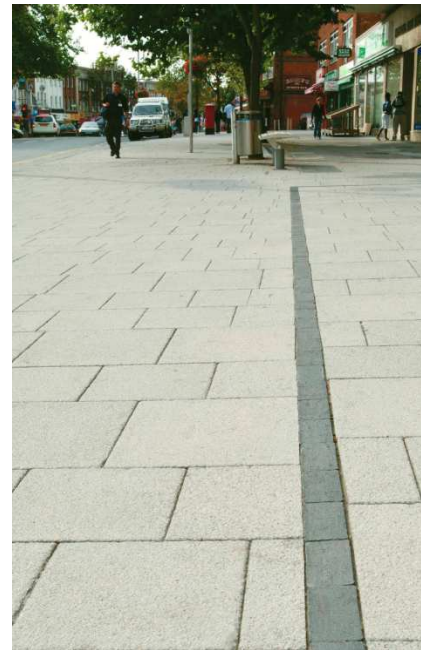
Colour: Silver grey

Marshalls Conservation Textured Paving combines the appearance of granite aggregate which is further enhanced by a secondary shot blasting process. The texturing process of the units allows the aggregate core to be displayed adding a further texture.

48.3% recycled material is used in the Marshalls Conservation Textured Paving.

They can be supplied in an extensive choice of size and thickness including fibre reinforced (not available steel reinforced) which makes the slab less likely to break if a vehicle drives over it and if the flag does break, the fibre reinforcement will hold the flag together, preventing trip hazards

Average supply cost - **£38.83/m²**



Charcon StoneMaster Paving

Colour: light buff washed

Charcon StoneMaster paving is a range of flag and block paving with a fine Sandstone mix that replicates natural sandstone and granite paving. The flags are pencil chamfered for enhanced aesthetics and protection against laying damage.

They are available in a selection of sizes but are not available with steel or fibre reinforcement however they are 80mm thick which makes them stronger than other unreinforced flags which makes them suitable for predominantly pedestrianised areas that may be subject to occasional light vehicular overrun and light mechanical sweepers.

They are pre-coated with USP (Urban Surface Protection) to protect against everyday contaminants such as chewing gum, oil, grease, moss and bird droppings.

Guaranteed minimum 50% reclaimed and recycled material.

Average supply cost - **£43.74/m²**



Charcon Ultrapave Concrete Paving

Colour: Silver grey

Charcon Ultrapave Concrete Paving is steel or fibre reinforced as standard (an unreinforced option is not available) which makes it particularly suitable for use in areas with significant vehicular overrun to prevent trip hazards if the paving fractures.

The use of the specially selected aggregates offers the look of natural granite to be provided at a substantial cost saving, with reinforcement being an added advantage.

Uses 81% recycled and reclaimed aggregates.

Average supply cost - **£46.13/m²**

