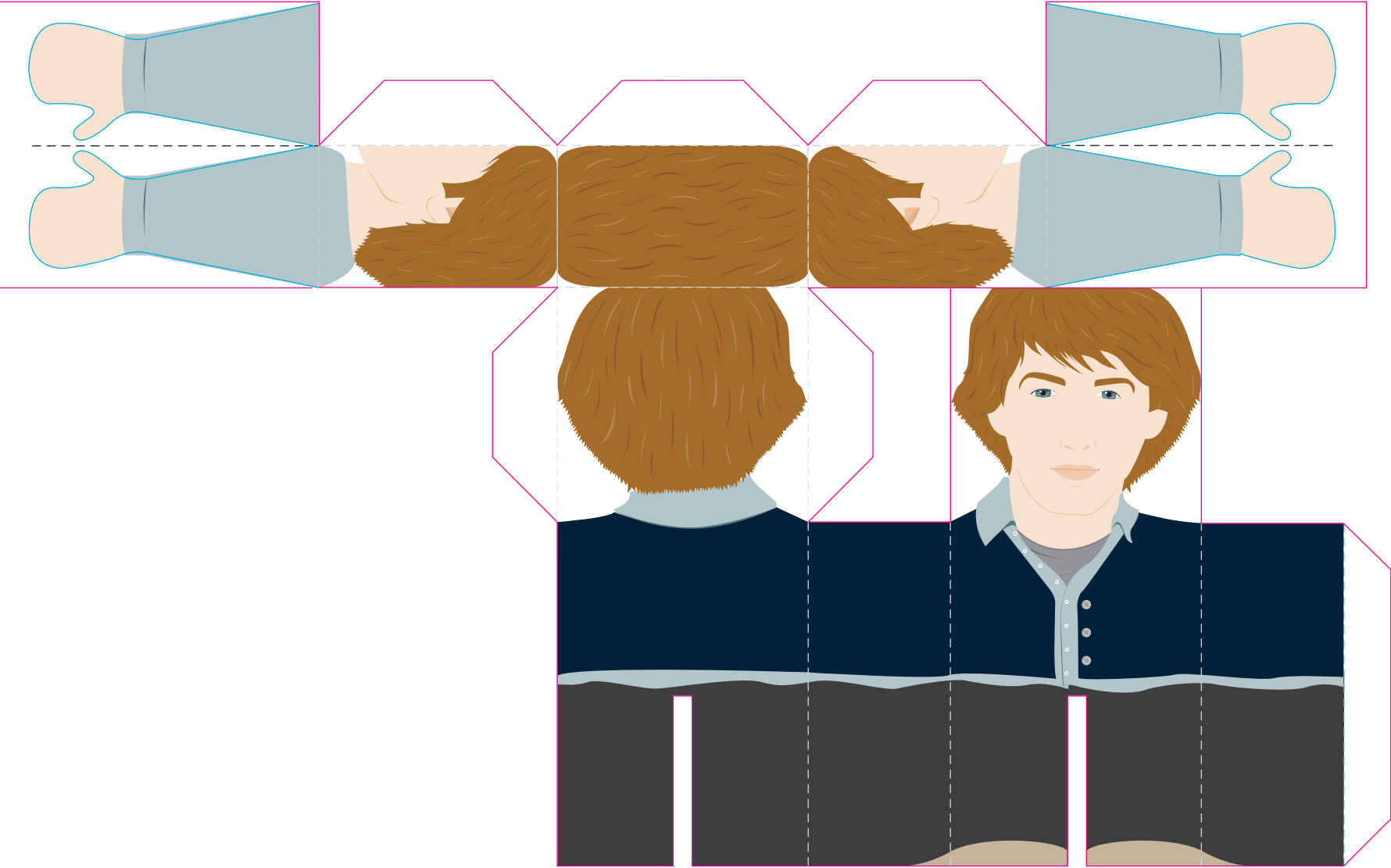


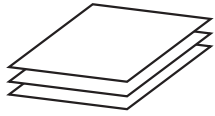
DOLLHOUSE DOLLS: TOPHER BRINK (#5 OF 7)



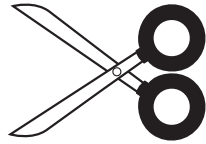
Materials needed:



printer



heavy paper



scissors



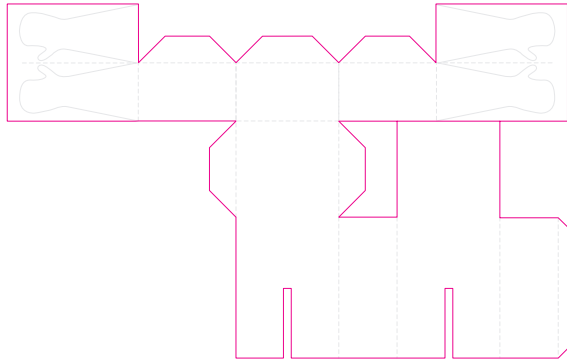
glue

Disclaimer:

This series consists of seven dolls in PDF format, exclusive to the Dollhouse Wiki (<http://dollhousewiki.fox.com>), available for download and construction for personal use. Illustration and layout by Melissa Lobach.

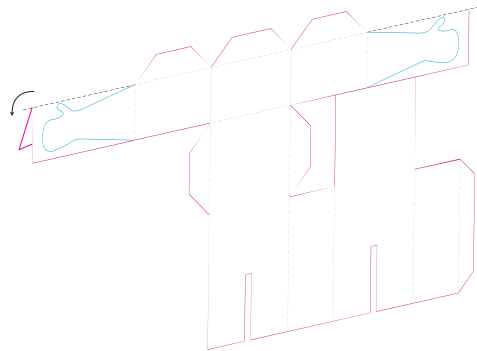
Step #1:

Cut along pink solid lines



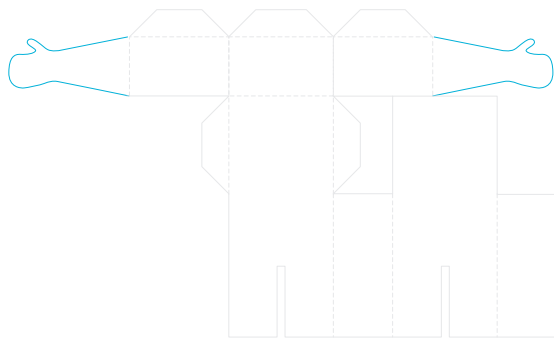
Step #2:

Fold arms in half on black dotted line and glue each arm



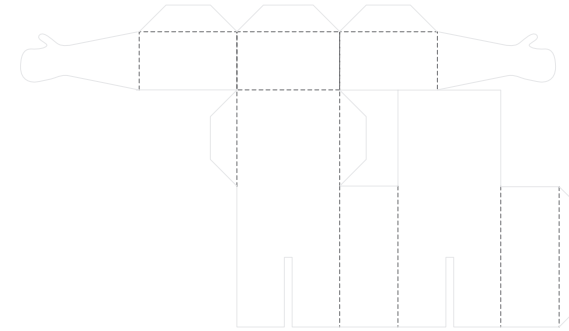
Step #3:

Trim arms on blue line



Step #4:

Finish folding on grey dotted lines and glue tabs in place



Finished "doll"

